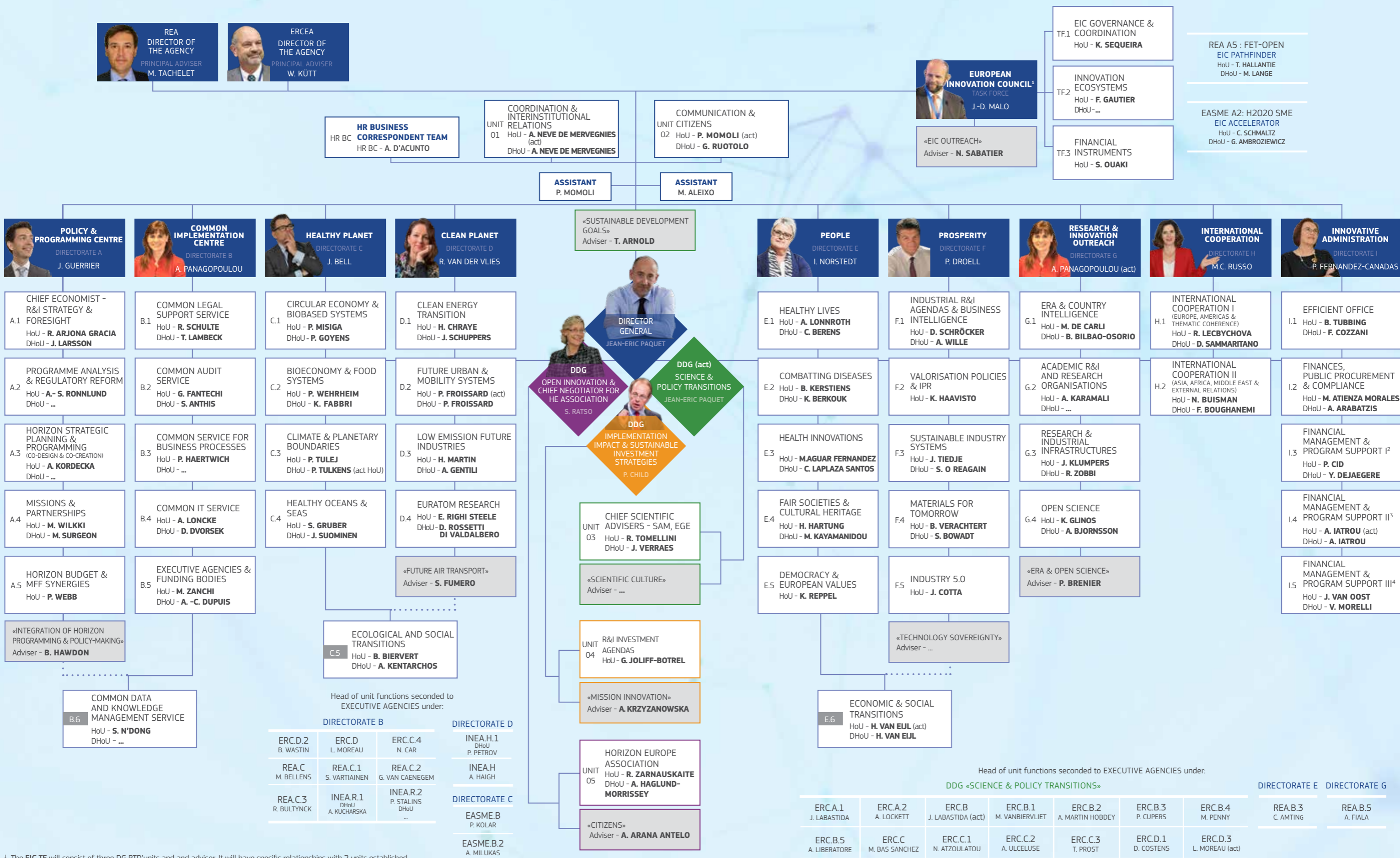


Directorate-General for RESEARCH and INNOVATION



¹ The EIC TF will consist of three DG RTD units and an adviser. It will have specific relationships with 2 units established in Executive Agencies (EA), respectively REA A5 and EASME A2. All together the 5 units constitute the extended EIC TF that is governed by a Steering Committee respectively chaired and co-chaired by the DGs of DG CNECT and DG RTD.
² Unit 13 in charge of Directorates A, B, G, H, TF EIC & Units 02, 03, 05 and experts management
³ Unit 14 in charge of Directorates E and D (without RFCS)
⁴ Unit 15 in charge of Directorates C, F, I and RFCS activity